

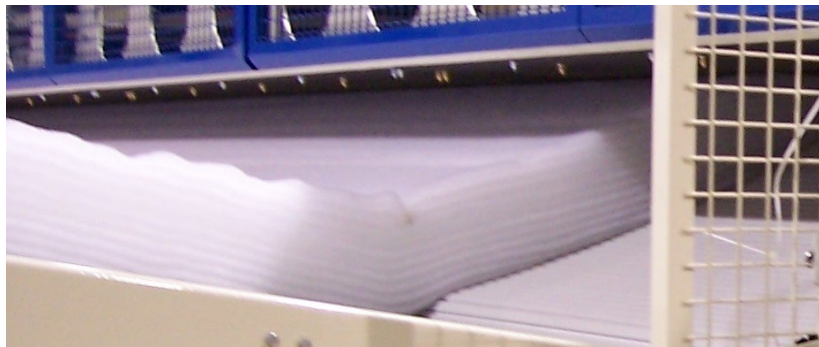


NONWOVEN TERMS

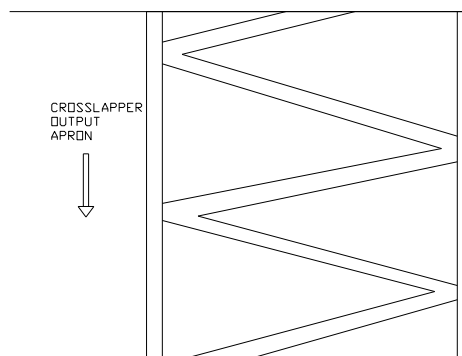
For the informed employee

Crosslapper Folds

A fold is made of two layers of web. Thus a fold is one passage of the bottom crosslapper carriage out and back. To make a good crosslapper batt the sides of the folds need to align on top of each other. As the floor apron moves forward, the carriage will lay the webs in a zigzag across the floor apron. Usually it is possible to adjust the speed of the floor apron to control the amount of overlap or underlap of the webs. If there is too much overlap it produces heavy streaks in the batt. If there is underlap then there are starved areas in the batt. Of course the more folds there are the slower the batt will exit the crosslapper. Most nonwoven lines have various stretching machines between the crosslapper and the winder. These machines diminish the appearance of the crosslapper zigzag marks



TOO MUCH OVERLAP MAKES HEAVY MARKS IN THE FINISHED PRODUCT
TOO MUCH UNDERLAP MAKES LIGHT MARKS.



"I have not failed. I've just found 10,000 ways that won't work." - Thomas Alva Edison (1847-1931)

Training tools by Nonwoven Tools LLC
Visit us at nonwoventools.com
Copyright Nonwoven Tools LLC 2009